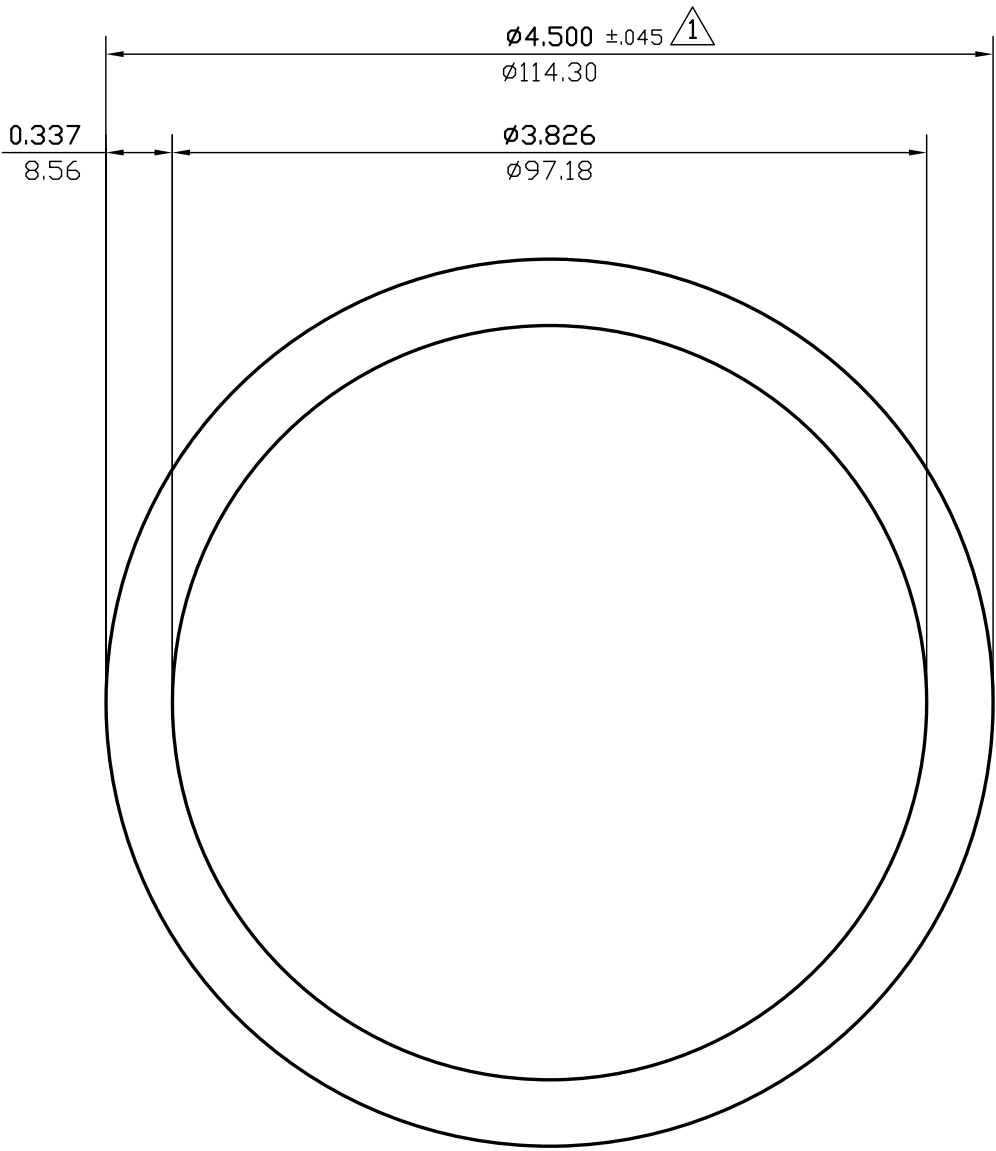


NOTE: BREAK ALL CORNERS WITH 0.015" (.38 MM) RADIUS UNLESS OTHERWISE SPECIFIED. STANDARD TOLERANCES TO APPLY UNLESS OTHERWISE SPECIFIED.

CUSTOMER <b>CAN ART STD.</b>	DIE No. <b>EH05871</b>	REV. No. <b>3</b>
DESCRIPTION <b>4" SCHED. 80 PIPE</b>	CUSTOMER PART No.	PROPOSAL No. <b>H-56183</b>
	QUOTE No. <b>L08-0196-2</b>	



MIN. ALLOWED WALL THICKNESS 0.295"

WALL THICKNESS **0.337 (8.56)** EXCEPT AS SHOWN

DATE	REV	DESCRIPTION	BY
03/10/23	3	REMOVED ALLOY	JASON
05/30/19	2	ADDED MIN. ALLOWED WALL THICKNESS.	G.W.
EST.AREA	<b>4.407</b>	IN. <sup>2</sup>	EST.AREA <b>2843.525</b> MM. <sup>2</sup>
EST.WT.	<b>5.289</b>	LBS/FT.	EST.WT. <b>7.871</b> KG/M.
EST.PER.	<b>26.157</b>	IN.	EST.PER. <b>664.385</b> MM.
OUT PER.	<b>14.137</b>	IN.	OUT PER. <b>359.1</b> MM.
C.C.D.	<b>4.500</b>	IN.	C.C.D. <b>114.300</b> MM.
FINISH	<b>M/F</b>		ALLOY
CKD BY	FACTOR <b>5</b>	SCALE <b>1:1</b>	DWN BY <b>L.G.</b> DATE <b>04/30/2008</b>

# CAN ART

85 PARKSHORE DRIVE  
BRAMPTON, ONT L6T 5M1  
TEL. NO. (905) 791-1464  
FAX NO. (905) 791-9151  
WEB: [www.canart.com](http://www.canart.com)

ALUMINUM EXTRUSION INC.

THIS DRAWING IS NOT NECESSARILY A COPY OF YOUR ORIGINAL. PLEASE APPROVE DIMENSIONS AND TOLERANCES INDICATED. CAN ART ASSUMES NO RESPONSIBILITY EITHER TECHNICAL OR LEGAL FOR HAVING THIS SHAPE MADE. THE CUSTOMER AGREES TO FULLY PROTECT CAN ART ALUMINUM FROM CLAIMS OF OTHERS RESULTING FROM THIS SHAPE.

SIGNED: \_\_\_\_\_ DATE: \_\_\_\_\_